

# IMMINGHAM EASTERN RO-RO TERMINAL



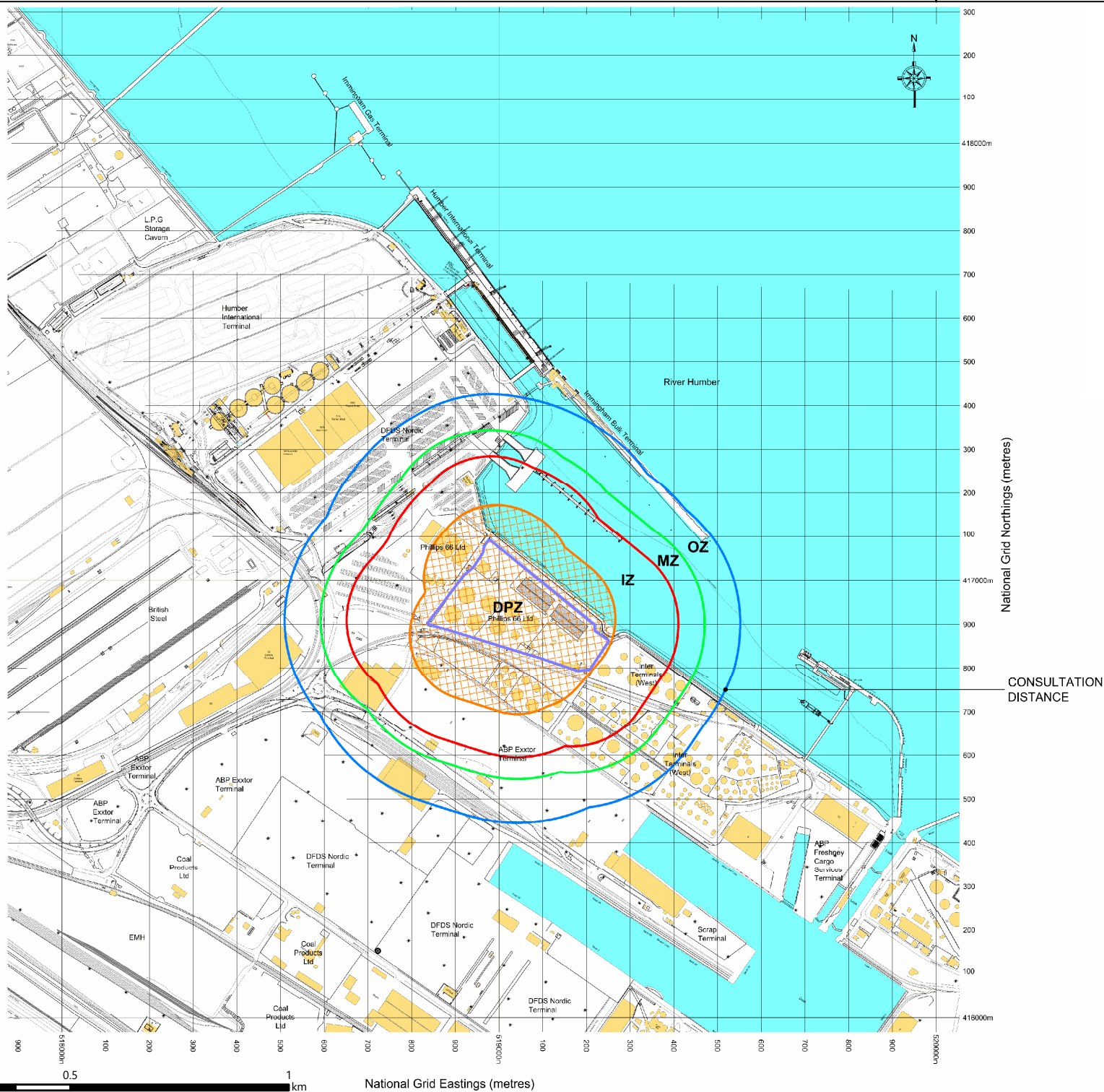
Environmental Statement: Volume 2  
Figures: Chapter 18: Land Use Planning  
Document Reference: 8.3.18

APFP Regulations 2009 – Regulation 5(2)(a) and 5(2)(e)  
PINS Reference – TR030007

December 2022

## Figures

8.3.18(a)	Figure 18.1	HSE land use planning zones for Phillips 66 Ltd – Immingham Pipeline Centre
8.3.18(b)	Figure 18.2	HSE land use planning zones for Phillips 66 Ltd – Immingham Propylene Storage
8.3.18(c)	Figure 18.3	HSE land use planning zones for Exolum (West) [(Previously Inter Terminal (West))]
8.3.18(d)	Figure 18.4	HSE land use planning zones for Exolum (East) [(Previously Inter Terminal (East))]
8.3.18(e)	Figure 18.5	HSE land use planning zones for ABP Immingham Bulk Park
8.3.18(f)	Figure 18.6	HSE land use planning zones for Immingham Fertiliser Terminal
8.3.18(g)	Figure 18.7	HSE land use planning zones for Associated British Ports Shed 2 and 3
8.3.18(h)	Figure 18.8	HSE land use planning zones for Associated Petroleum Terminals (Immingham) Ltd
8.3.18(i)	Figure 18.9	HSE land use planning zones for Origin UK Operations Ltd
8.3.18(j)	Figure 18.10	HSE land use planning zones for Tronox Pigment UK Ltd and other sites in the vicinity
8.3.18(k)	Figure 18.11	Safeguarding zones for ABP Port of Immingham explosives licenced site
8.3.18(l)	Figure 18.12	Combined HSE land use planning zones for all major hazard sites and pipelines



## Legend

COMAH Site Boundary

REFER TO DWG NO 17/G/66 FOR SITE OVERVIEW PLAN

### HSE Consultation Zones

Phillips 66 Ltd.  
Immingham Pipeline Centre  
West Riverside, Immingham  
North Lincolnshire  
DN40 2PB

HSE HID CI5 No: H0577  
Grid Ref: TA 190 169

Prepared - June 2008  
This map supersedes all  
previous or undated maps.

All development proposals within the  
DPZ are to be referred to HSE in  
accordance with guidance LSPSS\_C

DPZ = Development Proximity Zone  
IZ = Inner Zone  
MZ = Middle Zone  
OZ = Outer Zone

© ABPmer, All rights reserved, 2022..

Date	By	QA
17/08/2022	MW	SH
Projection	British National Grid	
Scale (A4)	1:12,500	
Project no.	17/G/66-1	

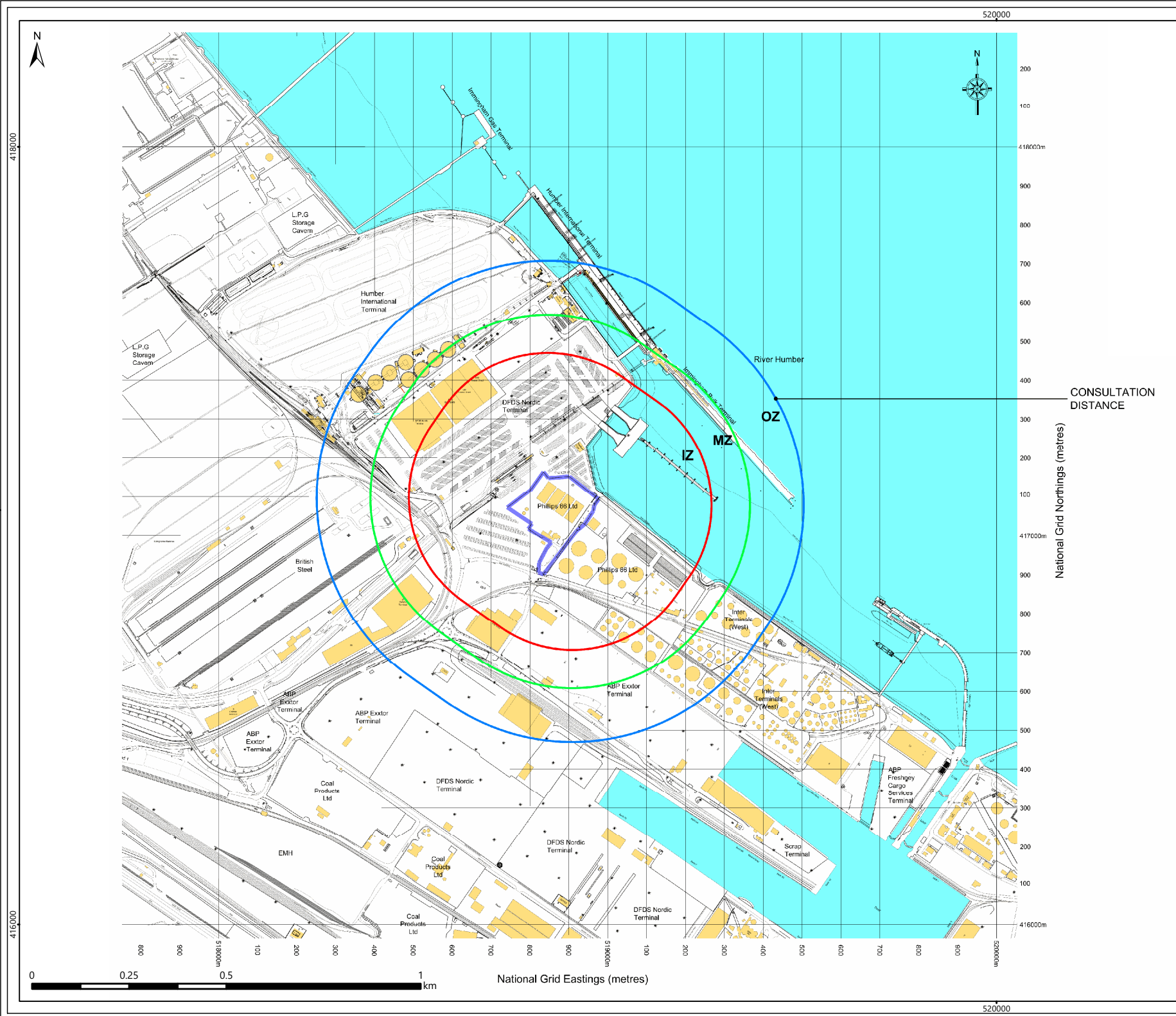
Fig18.1\_17G66-1\_HSE\_Consultation\_Zones\_DPZ\_A4



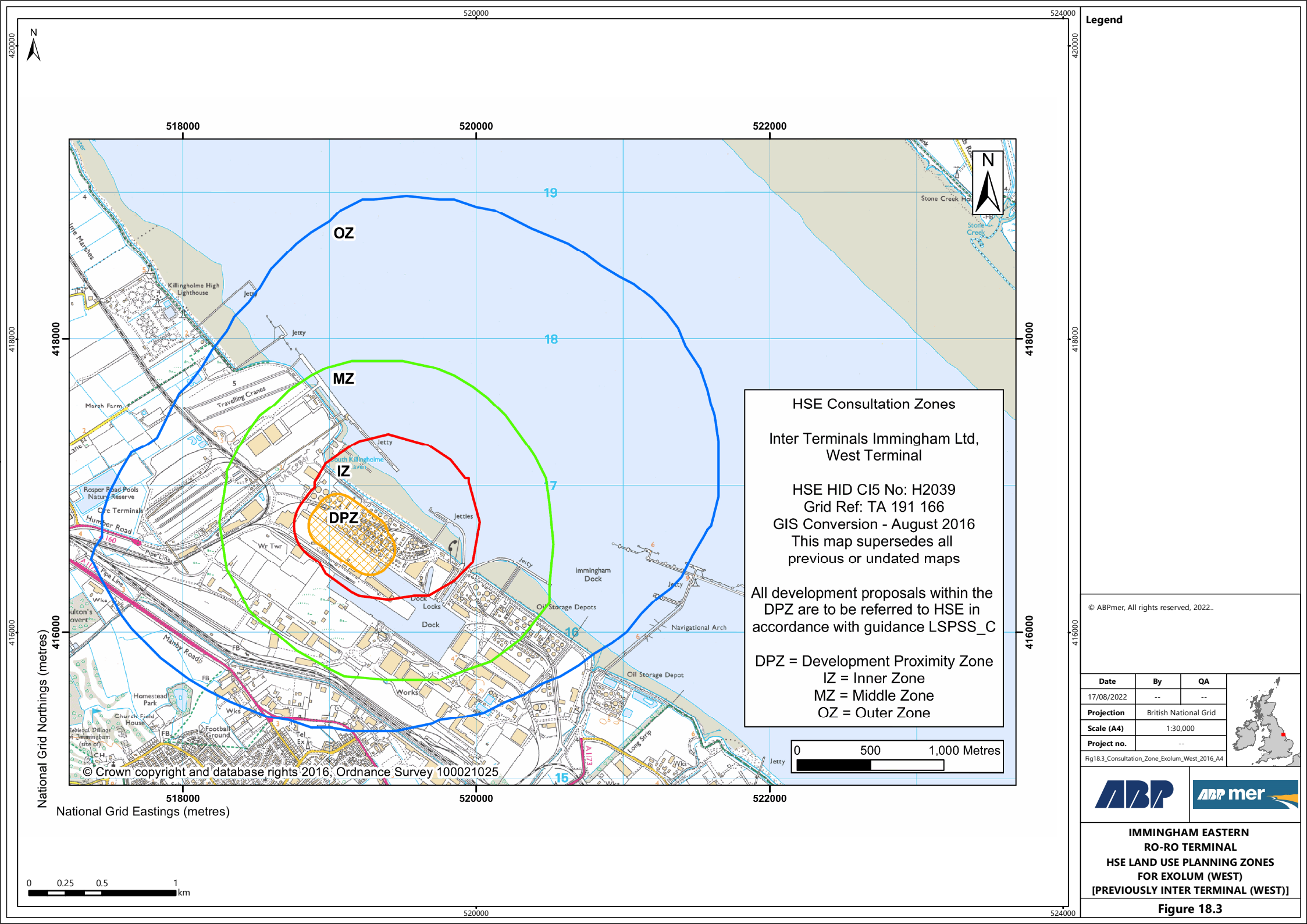
**IMMINGHAM EASTERN  
RO-RO TERMINAL  
HSE LAND USE PLANNING  
ZONES FOR PHILLIPS 66 LTD –  
IMMINGHAM PIPELINE CENTRE**

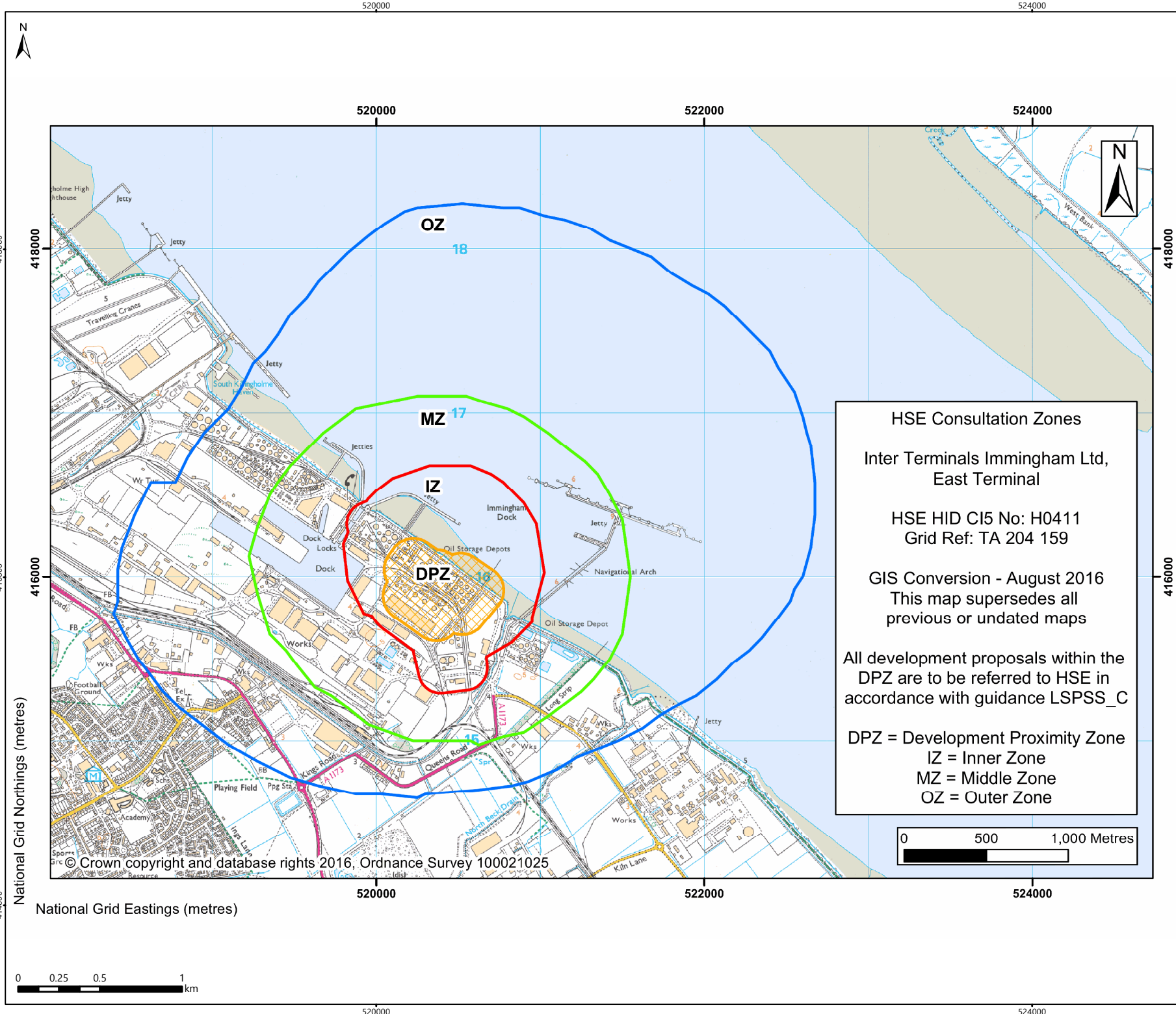
**Figure 18.1**











**Legend**

© ABPmer, All rights reserved, 2022..

Date	By	QA
17/08/2022	--	--

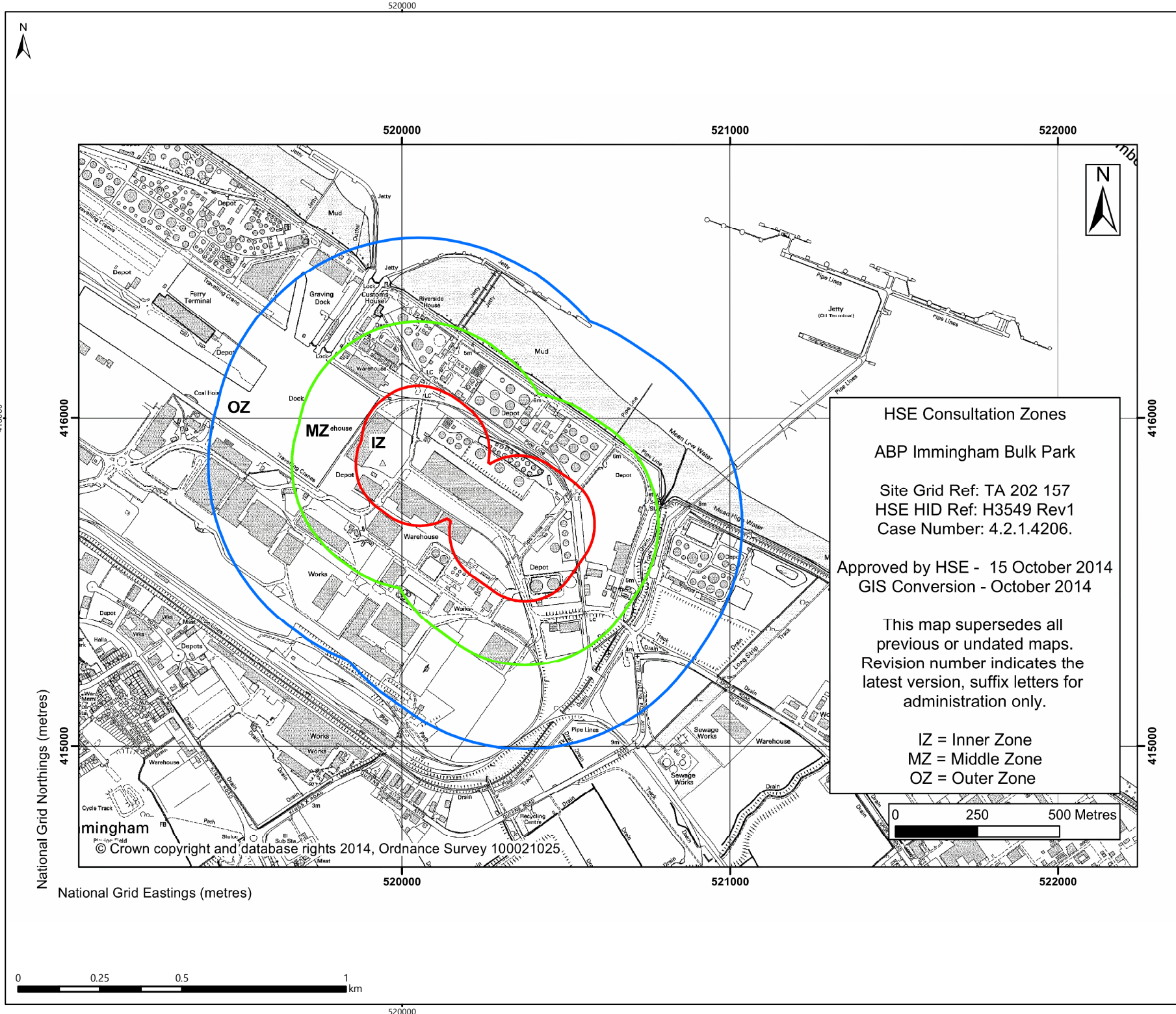
**Projection** British National Grid  
**Scale (A4)** 1:30,000  
**Project no.** --

Fig18.4\_Consultation\_Zone\_Exolum\_East\_2016\_A4

**IMMINGHAM EASTERN  
 RO-RO TERMINAL  
 HSE LAND USE PLANNING ZONES  
 FOR EXOLUM (EAST)  
 [PREVIOUSLY INTER TERMINAL (EAST)]**

**Figure 18.4**





**HSE Consultation Zones**

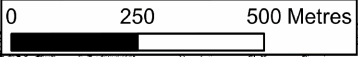
**ABP Immingham Bulk Park**

Site Grid Ref: TA 202 157  
HSE HID Ref: H3549 Rev1  
Case Number: 4.2.1.4206.

Approved by HSE - 15 October 2014  
GIS Conversion - October 2014

This map supersedes all previous or undated maps. Revision number indicates the latest version, suffix letters for administration only.

IZ = Inner Zone  
MZ = Middle Zone  
OZ = Outer Zone



**Legend**

© ABPmer, All rights reserved, 2022..

Date	By	QA
17/08/2022	--	--

**Projection** British National Grid

**Scale (A4)** 1:15,000

**Project no.** --

**IMMINGHAM EASTERN  
RO-RO TERMINAL**

**HSE LAND USE PLANNING ZONES  
FOR ABP IMMINGHAM BULK PARK**

**Figure 18.5**





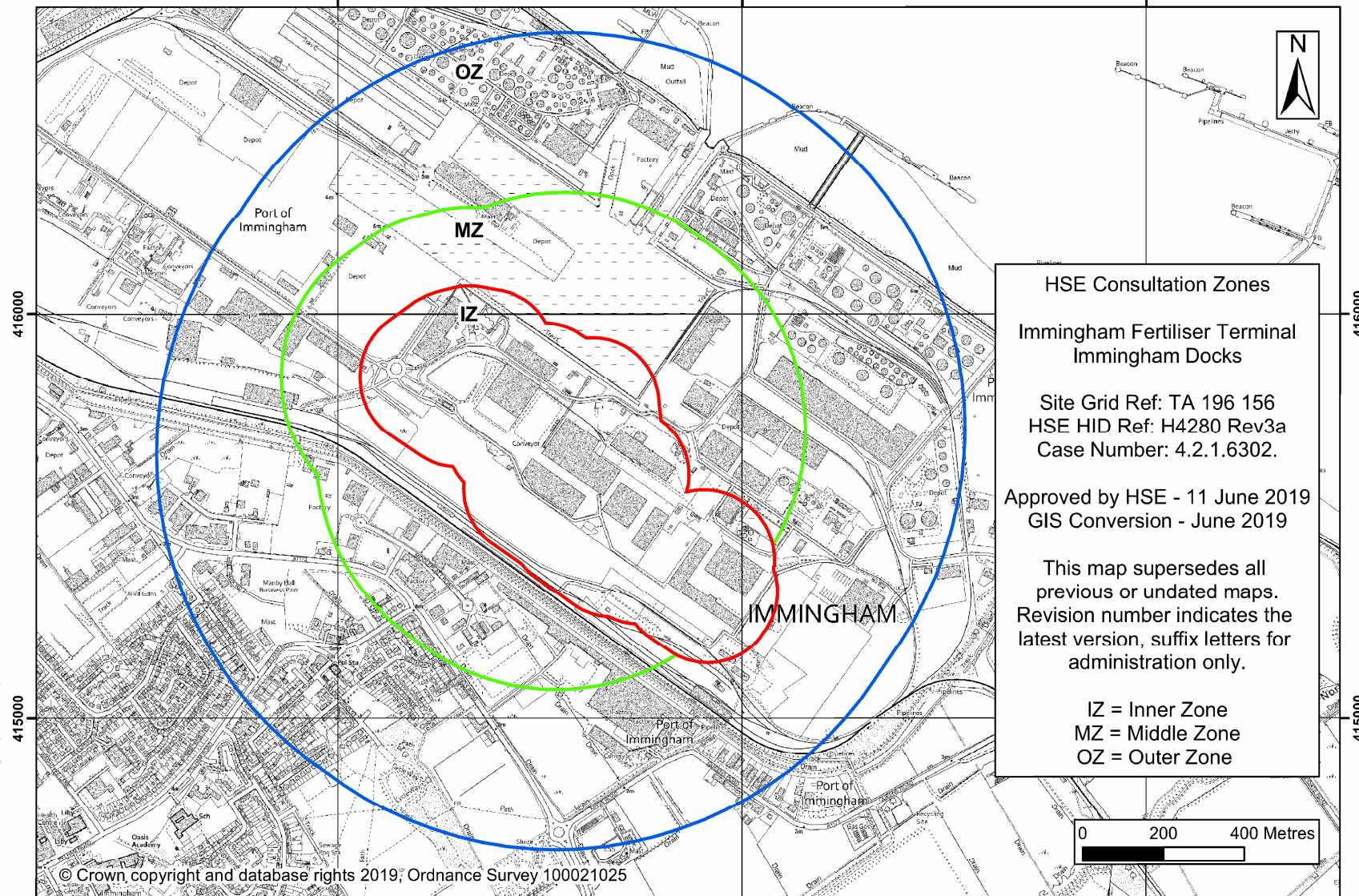
520000

Legend

519000

520000

521000



National Grid Northings (metres)

National Grid Eastings (metres)

0 0.25 0.5 1 km

520000

© ABPmer, All rights reserved, 2022..

Date	By	QA
17/08/2022	--	--
Projection	British National Grid	
Scale (A4)	1:15,000	
Project no.	--	

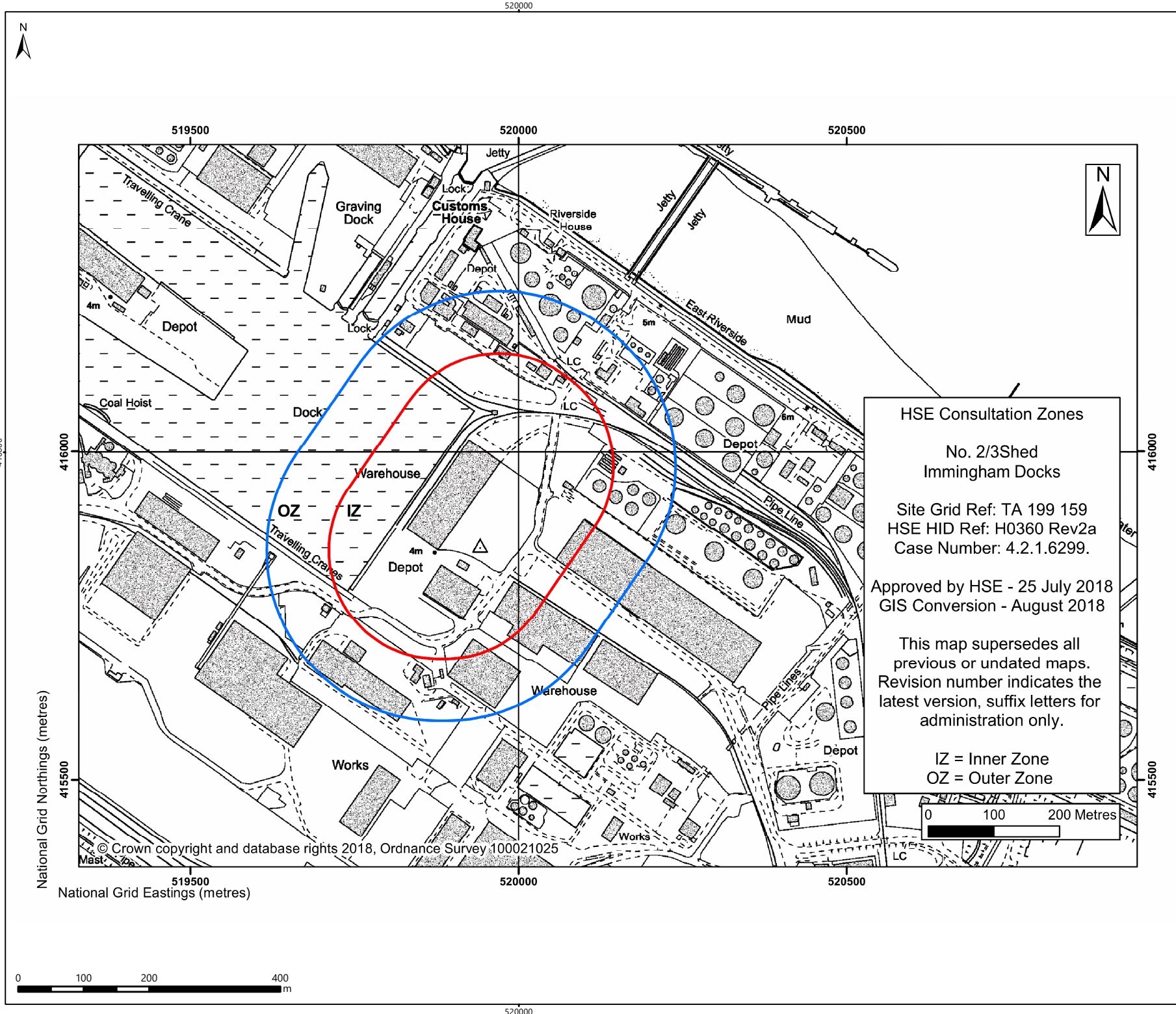
Fig18.6, Consultation\_Zone\_Fertiliser\_Terminal\_2019\_A4



**IMMINGHAM EASTERN  
RO-RO TERMINAL**

**HSE LAND USE PLANNING ZONES  
FOR IMMINGHAM FERTILISER TERMINAL**

Figure 18.6



**Legend**

© ABPmer, All rights reserved, 2022..

Date	By	QA
17/08/2022	--	--

**Projection** British National Grid

**Scale (A4)** 1:7,500

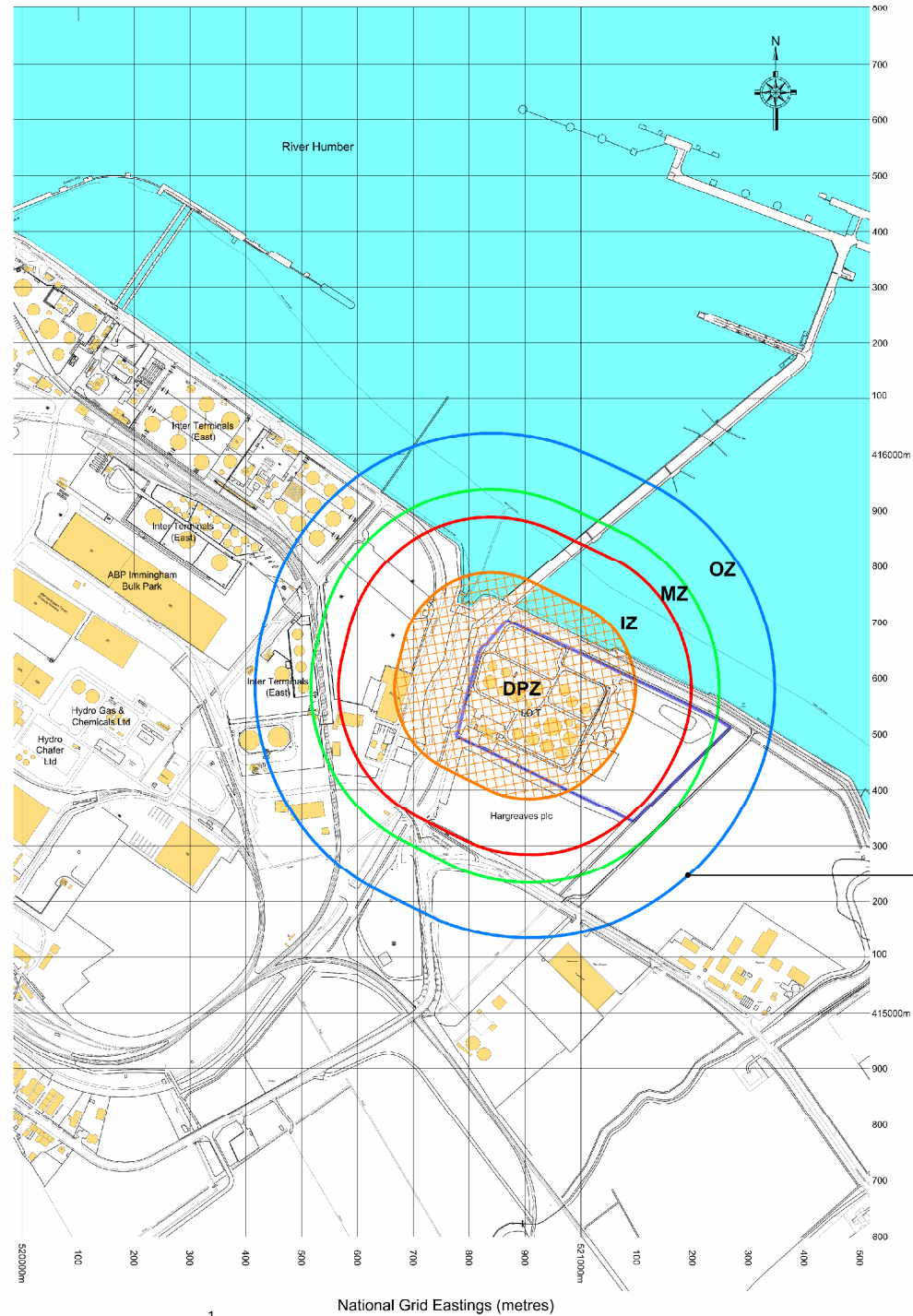
**Project no.** --

Fig18.7\_Consultation\_Zone\_Shed\_2-3\_2018\_A4

**IMMINGHAM EASTERN  
RO-RO TERMINAL  
HSE LAND USE PLANNING  
ZONES FOR ASSOCIATED BRITISH  
PORTS SHED 2 AND 3**

**Figure 18.7**





**Legend**  

COMAH Site Boundary

REFER TO DWG NO 17/G/66 FOR SITE OVERVIEW PLAN

HSE Consultation Zones

Immingham Oil Terminals (Immingham) Ltd.  
Immingham Oil Terminal, Queens Road  
Immingham, North East Lincolnshire  
DN40 2PN

HSE HID C15 No: H0974  
Grid Ref: TA 209 156

GIS Conversion - July 2008  
This map supersedes all previous or undated maps.

All development proposals within the DPZ are to be referred to HSE in accordance with guidance LSPSS\_C

DPZ = Development Proximity Zone  
IZ = Inner Zone  
MZ = Middle Zone  
OZ = Outer Zone

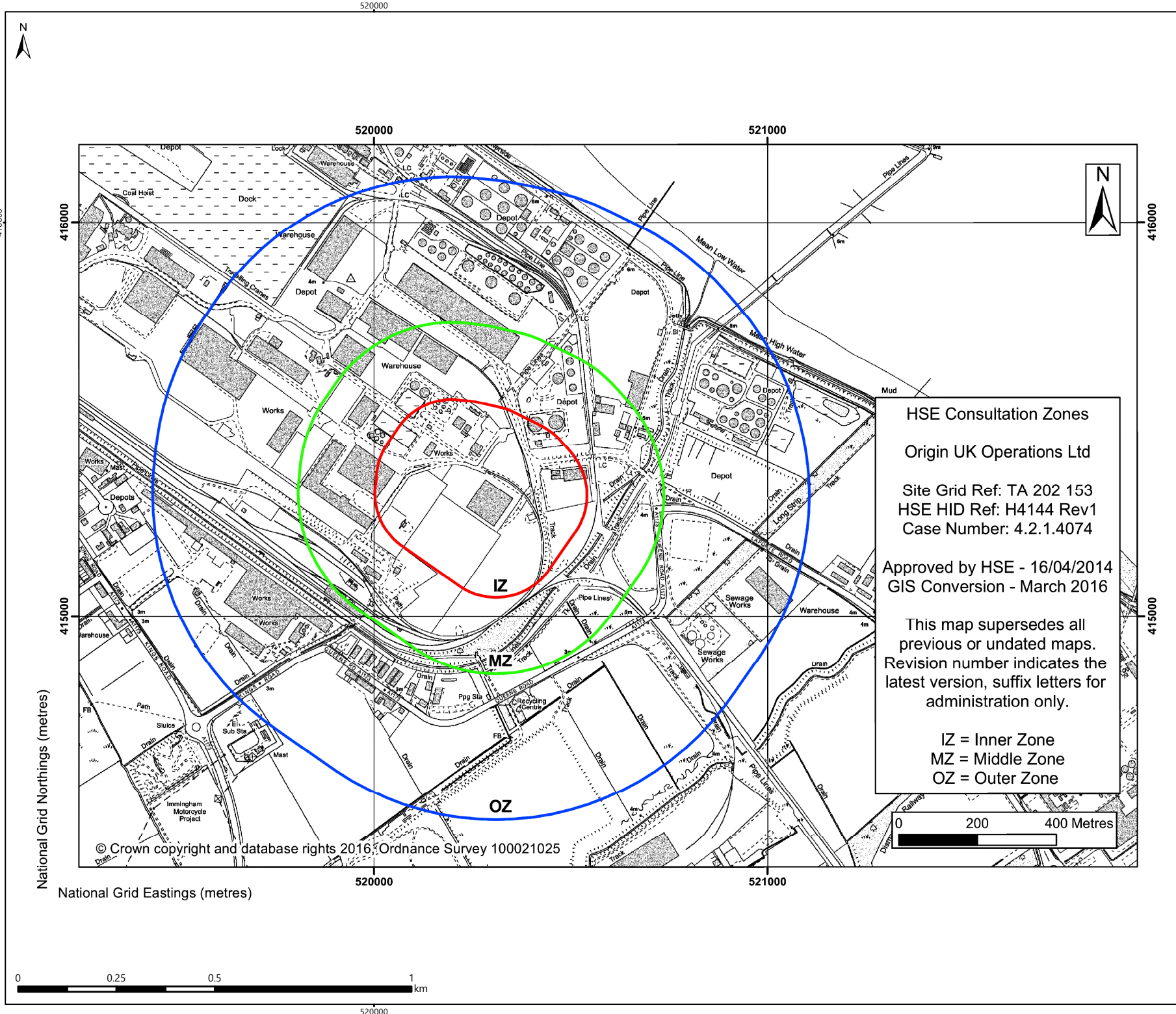
© ABPmer, All rights reserved, 2022..

Date	By	QA
17/08/2022	MW	SH
<b>Projection</b>	British National Grid	
<b>Scale (A4)</b>	1:12,500	
<b>Project no.</b>	17/G/66-8	

**IMMINGHAM EASTERN  
RO-RO TERMINAL  
HSE LAND USE PLANNING ZONES  
FOR ASSOCIATED PETROLEUM  
TERMINALS (IMMINGHAM) LTD**

**Figure 18.8**





**Legend**

© ABPmer, All rights reserved, 2022.

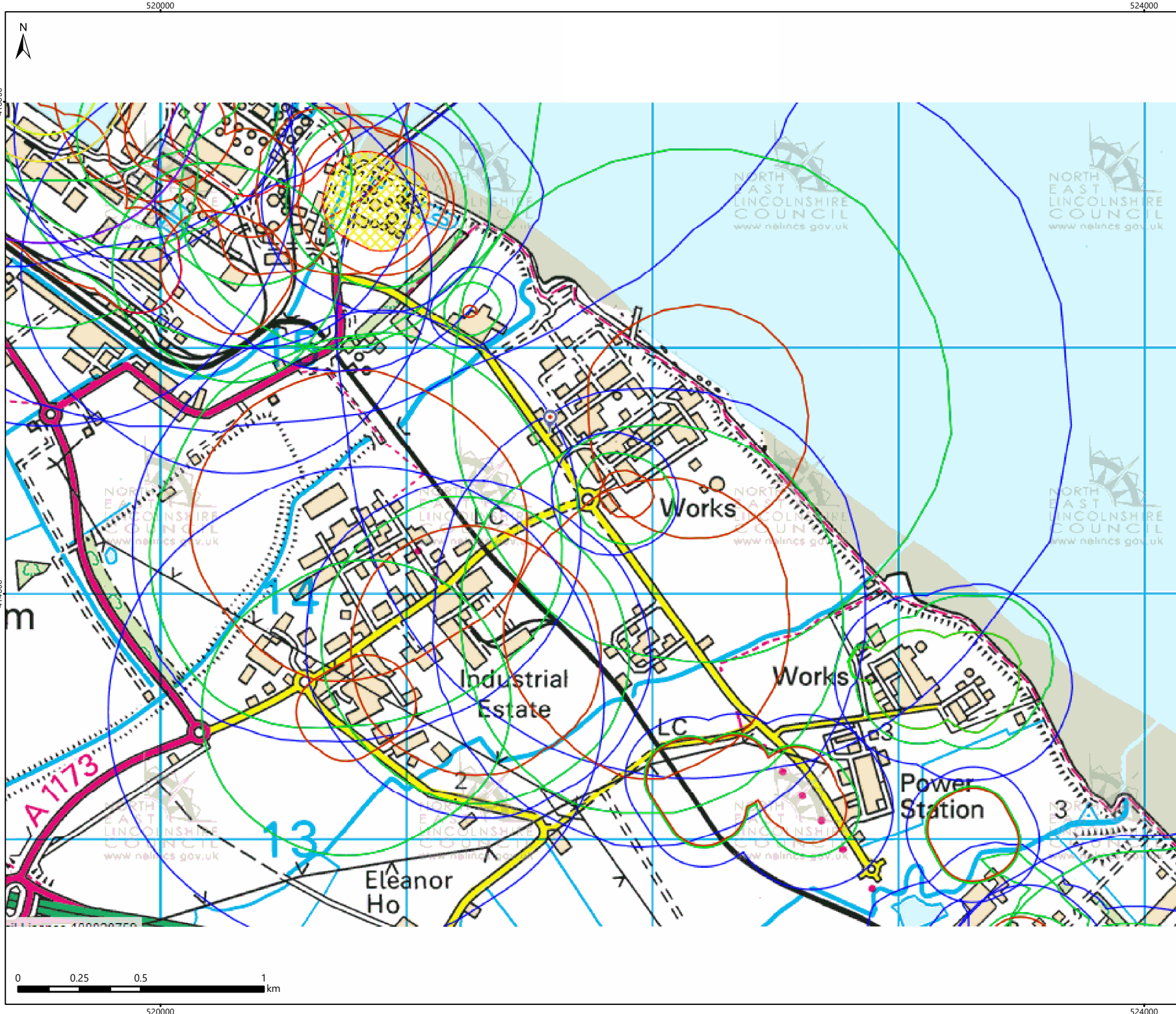
Date	By	QA
17/08/2022	--	--

Projection	British National Grid
Scale (A4)	1:12,500
Project no.	--

Fig18.9\_H4144\_Origin\_UK\_Fertilisers\_Ltd\_A4

**IMMINGHAM EASTERN  
RO-RO TERMINAL**  
**HSE LAND USE PLANNING ZONES  
FOR ORIGIN UK OPERATIONS LTD**

**Figure 18.9**



**Legend**

© ABPmer, All rights reserved, 2022..

Date	By	QA
17/08/2022	--	--

**Projection** British National Grid

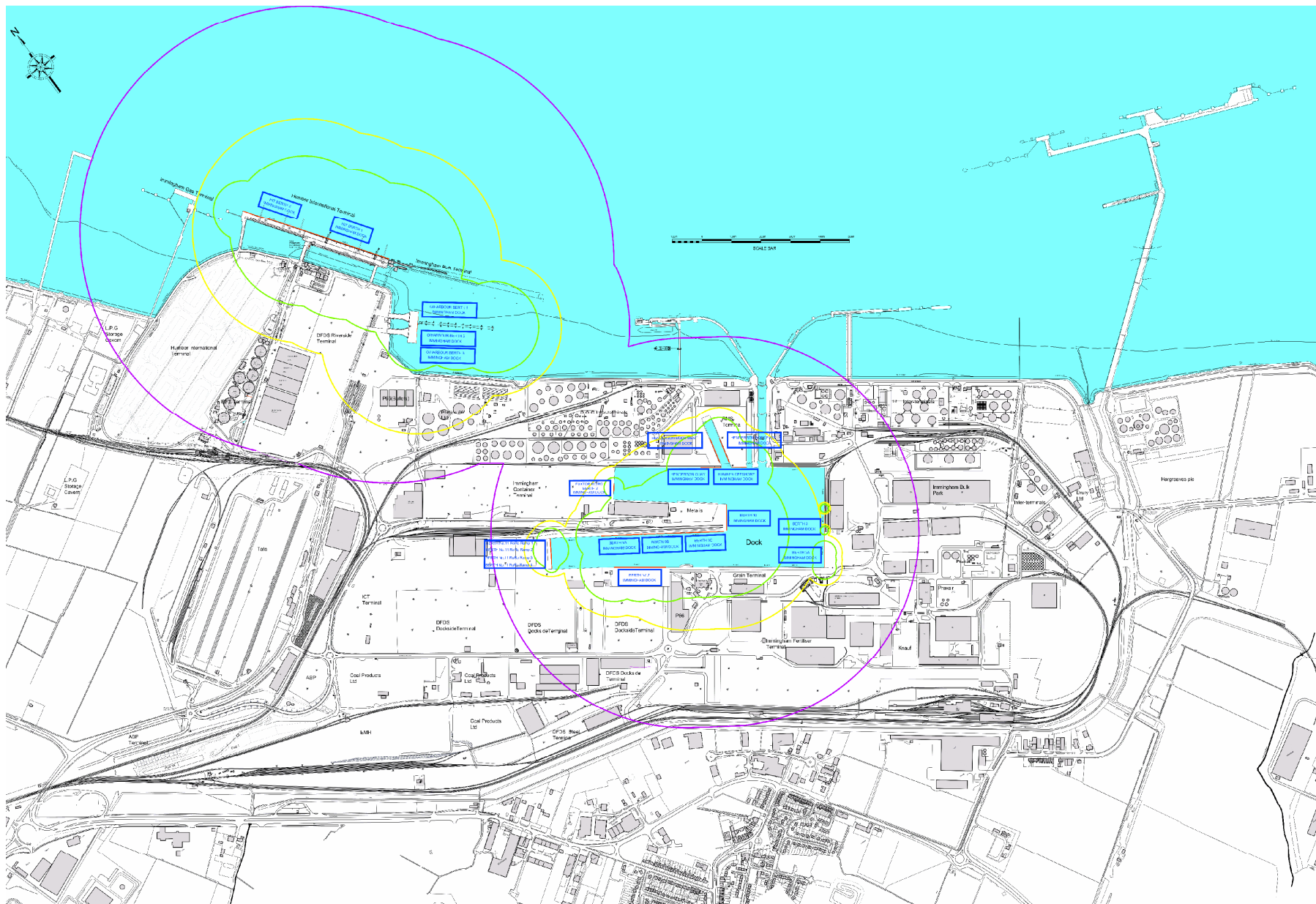
**Scale (A4)** 1:20,000

**Project no.** --

**IMMINGHAM EASTERN  
RO-RO TERMINAL  
HSE LAND USE PLANNING  
ZONES FOR TRONOX PIGMENT UK LTD  
AND OTHER SITES IN THE VICINITY**

**Figure 18.10**





# Legend

- Berth Length
- SD 1
- SD 2
- SD 3

This drawing is not to be scaled.

© ABPmer, All rights reserved, 2022.  
Reproduced from Ordnance Survey Land-line data by permission of Ordnance Survey on behalf of HMSO. © Crown Copyright and database right 2009. All rights reserved. Ordnance Survey Licence number 100024448.


Date	By	QA	
17/08/2022	SIN	--	
Projection	--	--	
Scale (A4)	--	--	
Project no.	17/G/23 - RevB		

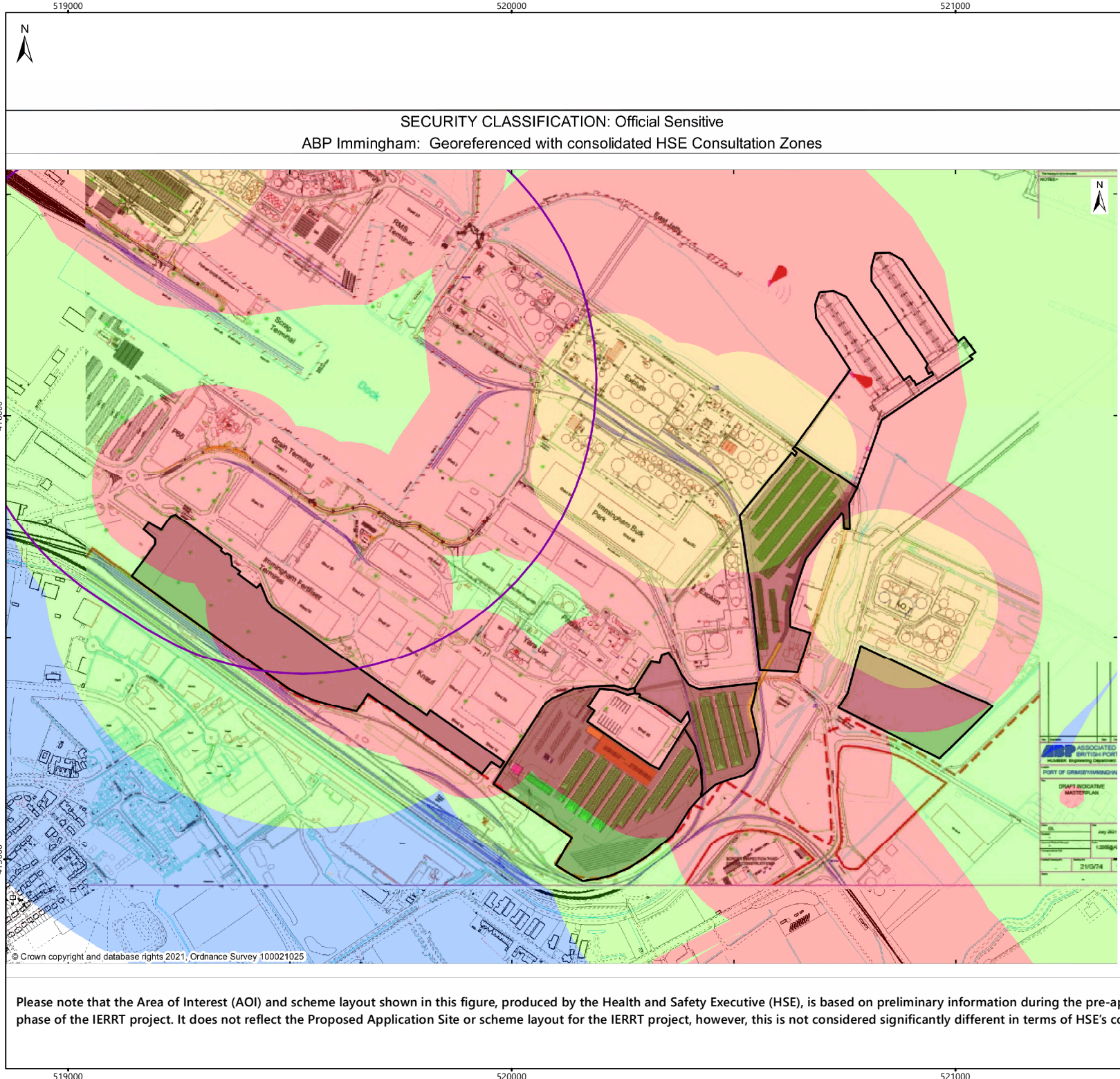
Fig18.11\_Port\_Safeguarding\_Plan\_Imm\_2017\_A4



**IMMINGHAM EASTERN  
RO-RO TERMINAL  
SAFEGUARDING ZONES  
FOR ABP PORT OF IMMINGHAM  
EXPLOSIVES LICENCED SITE**

**Figure 18.11**





SECURITY CLASSIFICATION: Official Sensitive  
ABP Immingham: Georeferenced with consolidated HSE Consultation Zones

- Legend**
- Explosive Site: CD
  - Area of Interest
  - Zone**
  - DPZ
  - Inner
  - Middle
  - Outer

© ABPmer, All rights reserved, 2022.

Date	By	QA
07/12/2022	--	--
Projection	British National Grid	
Scale (A4)	--	
Project no.	--	



**IMMINGHAM EASTERN  
RO-RO TERMINAL  
COMBINED HSE LAND USE  
PLANNING ZONES FOR ALL MAJOR  
HAZARD SITES AND PIPELINES**

**Figure 18.12**

Please note that the Area of Interest (AOI) and scheme layout shown in this figure, produced by the Health and Safety Executive (HSE), is based on preliminary information during the pre-application phase of the IERRT project. It does not reflect the Proposed Application Site or scheme layout for the IERRT project, however, this is not considered significantly different in terms of HSE's concerns.

